

CONSTRUCTION PROJECTS' GAME CHANGERS

How Predictive Project Management Will Revolutionize the Construction Industry



THE CHALLENGES FACED BY CONSTRUCTION PROJECTS

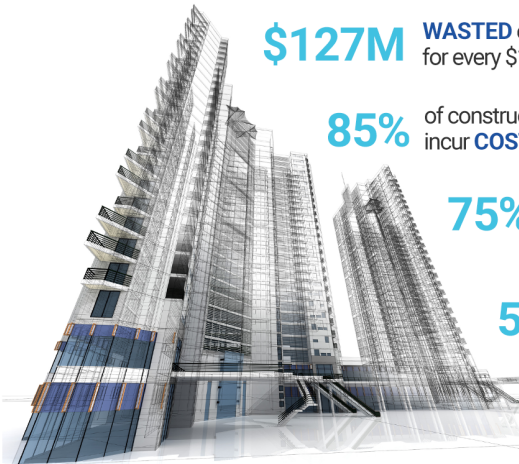
COSTLY SETBACKS REVEALED

\$127M WASTED every year for every \$1B spent

85% of construction projects incur **COST OVERRUNS**

75% of construction projects **EXPERIENCE DELAYS** by an average of 20

57% of construction projects **FAIL** due to insufficient transparency



WHAT'S THE WAY AHEAD?

THE NEED FOR AN ADVANCED WARNING SYSTEM



FORESEE ISSUES, ENSURE PROJECT SUCCESS

“What if there was a way to foresee and mitigate project challenges before they disrupt your timelines and budgets? Imagine having the power to predict issues and take proactive measures to ensure project success.”

THE SOLUTION

TRANSFORMING CONSTRUCTION PROJECTS

The capability your projects need is now a reality. Introducing **TrueProject** and **JobPlanner** – two powerful solutions that integrate seamlessly to transform the way you manage construction projects.

TrueProject is a KPI-based predictive project management SaaS solution that improves project health and performance. TrueProject uses advanced warning, predictive intelligence, and AI to identify potential project issues before they become critical.

JobPlanner is a construction project management software, offering a comprehensive suite of tools designed to streamline and optimize the project planning, execution, and bidding process.



WHAT DOES THE SOLUTION DELIVER?

INTEGRATED OFFERING TO MAXIMISE CONSTRUCTION PROJECT SUCCESS

Comprehensive Project Management

Keep your project on track. Manage daily tasks, RFIs, submittals, and access to critical documents.

Detailed Job Costing

Take control of your project finances with tools designed for job costing, contracts, invoices, budgets, and change orders.

Streamlined Preconstruction Processes

Preconstruction tools for preparation, qualifications, and bids.



Stakeholder Feedback
From Assessments

Project Hard Data
From Existing Systems

Collect
Hard Data & Stakeholder Feedback

Confirm
Best-Practice Compliance

Identify
Off-Track Activities

Predict
Project Risks

Derive
Integrated Insights

Guidance
Recommendations



Predictive Intelligence Hub

This offering serves as the epicenter of your project's universe, offering a holistic view of your construction landscape.

PM Health Dashboard

Know exactly what owners and GC's need to avoid surprises and 'status spin'. Transform how you see and use project data.

Unmatched Data Integrity

AI-based insights from combined stakeholder feedback and project hard data. Make informed, precise, and timely decisions.



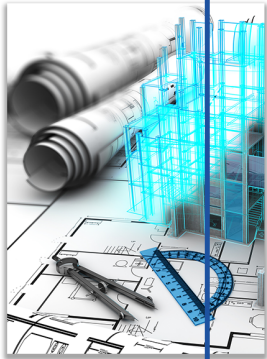
CONSTRUCTION PROJECTS' GAME CHANGERS

How Predictive Project Management Will Revolutionize the Construction Industry



WHAT LEADS TO PROJECT SUCCESS?

GROUNDING IN RESEARCH, PROVEN IN PRACTICE

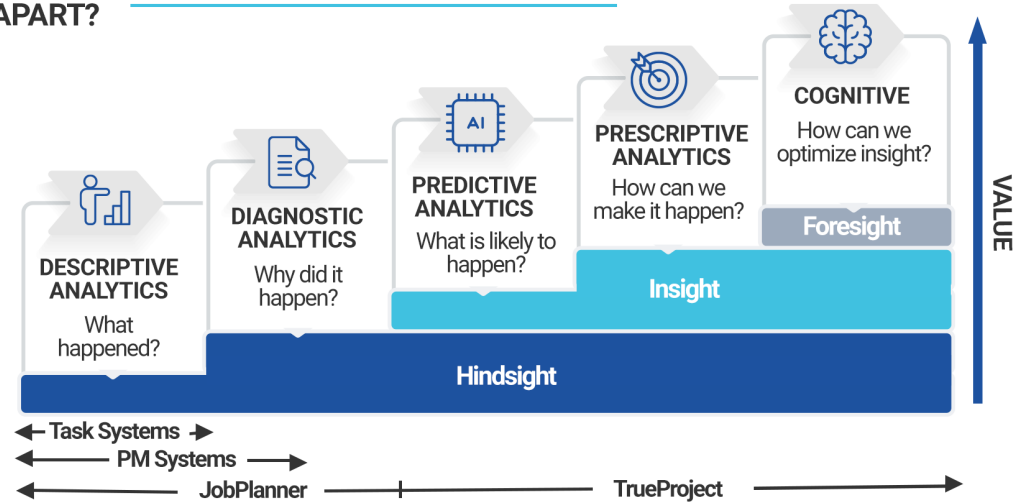


- 28** Best Practice Repositories
- 12** Knowledge Areas for Construction
- 335+** Key Performance Indicators
- 1000+** Proven Questions

WHAT SETS US APART?

SEE THE DIFFERENCE

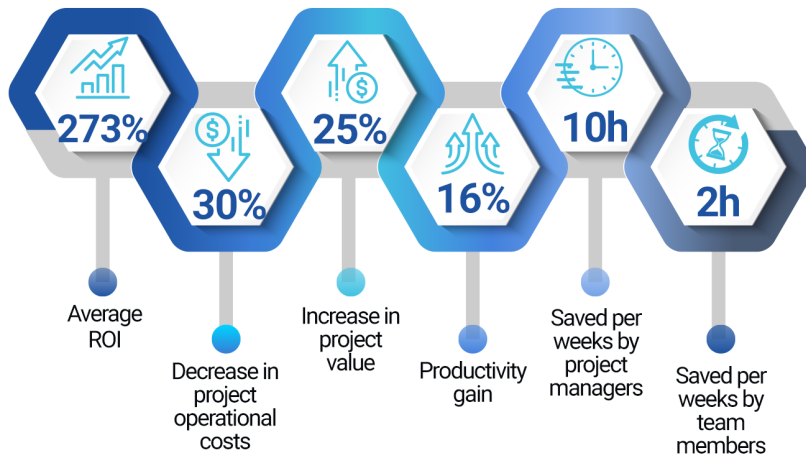
TrueProject and JobPlanner deliver unmatched value and foresight far beyond the reach of conventional systems, enabling you to anticipate challenges, streamline processes, and ensure project success with unprecedented precision and efficiency.



VALUE VS. COMMITMENT

BENEFITS EXCEEDS EXPECTATIONS

TrueProject speeds up project completion with less effort, quicker benefits, and improved value delivery. It eliminates obstacles and identifies issues early, reducing rework and enhancing productivity.



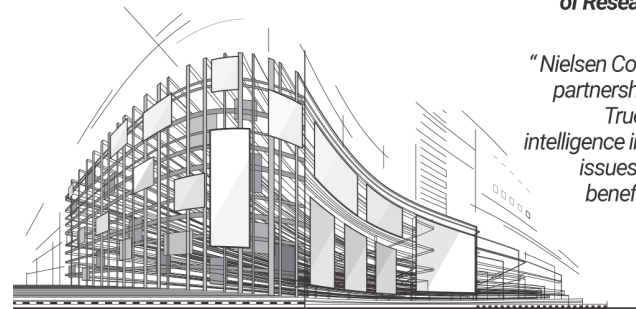
* The statistics reflect maximum values from customer assessments and real project improvements.

THE SUCCESS STORIES

REAL STORIES, REAL RESULTS

"TrueProject has addressed the opportunity to manage projects with the focus on performance and outcomes and provide the predictive insights and gain the knowledge to the health of your operations."

- Mark Smith, Partner and Head of Research (ISG)



"Nielsen Construction Services is excited to learn of the partnership and integration between JobPlanner and TrueProject. The capability of having predictive intelligence insight about potential project problems and issues known far in advance will be a tremendous benefit to the business and our clients' success."

- Ryan Nielsen, Owner (Nielsen Construction Solutions)

LEARN MORE ABOUT

JOBPLANNER

- +1 855 385 1954
- info@jobplanner.com
- jobplanner.com

TRUEPROJECT

- +1 484 4304989
- info@trueprojectinsight.com
- trueprojectinsight.com

